

DriveTech **Professional 4x4**
Off-Road Course Portfolio



drivetech.co.uk





Contents

Professional Off-Road Training
04

Overview Course Specifications
04

Professional 4x4
Familiarisation
06

Professional 4x4
Off-Road Driver - Basic
06

Professional 4x4
Off-Road Driver - Advanced
07

Professional 4x4
"In-House" Trainer
08

Professional ATV/UTV
Off-Road User - Basic
10

Professional ATV/UTV
Off-Road User - Advanced
10

Professional Sand and Shingle Driver
12

Professional Winch Operator - Basic
12

Professional Winch Operator
Advanced
13

Training Locations
14

Notes
15

Professional Off-Road Training

For many people, driving is often the most dangerous work-related activity that they undertake. For some, it is the main purpose of their job. Driving 4x4 vehicles professionally, particularly off-road, presents additional challenges. These include driving on unfamiliar surfaces such as grass, mud and rocks as well as controlling the vehicle on steep gradients and through water.

Many of the techniques required to drive safely off-road are counter-intuitive to drivers who have not been trained by experts.

Off-Road Driver Training

Our portfolio of practical and theory-based training courses are designed with the professional driver in mind and are fully accredited by RoSPA. The courses sit in our training framework allowing individuals to progress from a basic level to our in-house trainer qualification, enabling employers to help meet 'duty of care' obligations under the Provision and Use of Work Equipment Regulations (1998).

DriveTech's portfolio of training products and services include off-road and all-terrain vehicles such as 4x4s, sit-in and sit astride All-Terrain Vehicles (ATVs), 6x6, and specialist vehicles, together with supporting activities. In addition, on-road driver development courses are available in safety culture, eco-driving and speed awareness that can help improve all-round vehicle operating costs and availability. Training is supported by a suite of fleet risk management solutions including policy framework development and process design.

Our Training Framework

DriveTech will help you to identify your 4x4 driving risks and recommend the optimum training to build your off-road capability.

You can receive training at one of our many training venues conveniently located around the UK (found on page 14).

Alternatively, we can arrange for a trainer to meet you at an appropriate venue of your choice

Training is delivered typically up to a ratio of three drivers to one trainer.

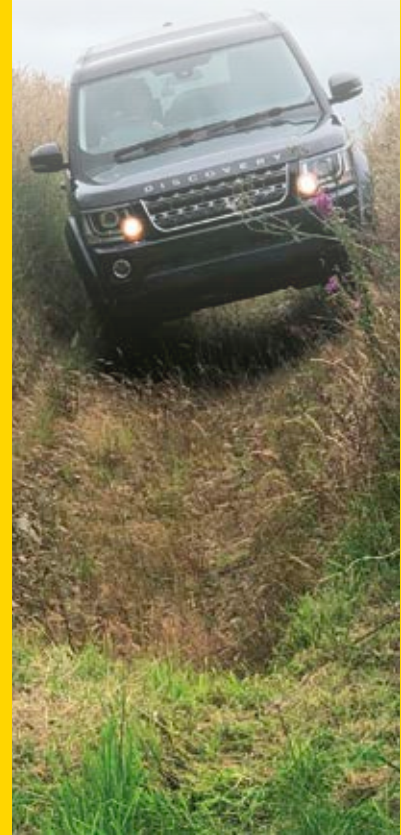
We provide comprehensive driver feedback, written course reports and certification for auditing purposes

'In-House' instructor training courses are also available for organisations who want to build their own internal capability.

Benefits to you

Our professional off-road training helps you to:

- gain peace of mind - meet your 'duty of care' obligations.
- progressive off-road training specifically designed for the professional driver.
- reduce fleet operating costs - through improved driving skills, lower fuel consumption, reduced insurance premiums and maintenance/repair expenditure.
- care more for the environment off-road training can improve driving techniques so there is less damage to the countryside, vehicles and equipment.
- ensure a continual improvement plan - giving a sustainable improvement in off-road safety performance.
- raise a general driving safety awareness culture.



Professional Off-Road Training Courses

Basic Level

Advanced Level

Trainer Level

Professional 4x4
Familiarisation
(Half day)

Professional 4x4
Off-Road Driver Basic
(Whole day)



Professional 4x4
Off-Road Driver
Advanced
(Whole day)

Professional 4x4
Sand and Shingle
Driver
(Whole day)



Professional 4x4
Off-Road "In-House"
Trainer (five days)

Professional ATV
Off-Road User Basic
(Whole day)



Professional ATV
Off-Road User
Advanced
(Half day)

Professional UTV
Off-Road User Basic
(Whole day)



Professional UTV
Off-Road User
Advanced
(Half day)

Professional Winch
Operator Basic
(Whole day)



Professional Winch
Operator Advanced
(Whole day)



Talk to us about bespoke courses that can be designed around your specific customer requirements.

call

01256 495 732

email

tellmemore

@drivetech.co.uk

visit

drivetech.co.uk

Professional 4x4 | Familiarisation

Course aims

To Introduce drivers to the handling characteristics and the technology associated with a 4x4 vehicle.

During this course participants will identify, discuss and practice the following topics relating to the operation of a 4x4 vehicle in an on-road or unpaved track environment:

- Improved vehicle knowledge.
- Traction and how to maintain it.
- Types of four-wheel drive systems.
- When and how to engage and disengage four-wheel drive.
- Safe operation of a 4x4 vehicle.
- Technology associated with 4x4 vehicles.

Course outline

This RoSPA accredited half day course is designed for a 1:3 ratio starting at either 08.30 or 12.30. The course focuses on the use of 4x4 technology to assist drivers when negotiating normally benign terrain such as roads and tracks that are affected by inclement weather conditions. The course comprises:

- An interactive workshop to introduce the types of 4x4 systems available, how and when to use them safely and available technology.
- Practical 'behind the wheel' tuition, enabling the delegates to practice the techniques themselves including gradients, slopes and simulated terrain.
- Each delegate receives feedback on their performance and a DriveTech certificate of attendance.

Who is the course suitable for?

The course will be of most value to any person needing to drive a 4x4 vehicle on roads and tracks that are affected by inclement weather conditions such as snow and minor flooding in the course of their duties.

Professional 4x4 | Off-Road Driver - Basic

Course aims

A one-day RoSPA accredited course that provides basic information, guidance and tuition for those unfamiliar with off-road driving. The course focuses on the principles and practice of driving off-road safely.

Course outline

The full-day course is designed for a 1:3 ratio starting at 09.00 am. The course emphasises the health and safety aspects of driving off-road and comprises:

- An interactive workshop to introduce the types of 4x4 systems available, how to ensure your safety and the safety of others, vehicle and journey preparation, and the principles of negotiating typical off-road terrain.
- A demonstration drive with a qualified AA DriveTech off-road instructor who will illustrate key principles of off-road driving.
- Practical 'behind the wheel' tuition, enabling the delegates to practice the techniques themselves including gradients, slopes, rough terrain, mud and water.
- Each delegate receives feedback on their performance and an AA DriveTech certificate (RoSPA accredited) if they complete the course successfully.

Who is the course suitable for?

The course will be of most value to those with little or no experience, who need to drive off-road occasionally as part of their job.

Professional 4x4 Off-Road Driver - Advanced

Course aims

This course follows on from the Professional 4x4 Off-Road Driver - Basic and is also RoSPA accredited. It provides a progression in the principles and practice of off-road 4x4 driving. The aim is to build on the basic principles by introducing trainees to more challenging terrain, environment and situations throughout the course.

Who is the course suitable for?

The course is designed as a stand-alone for drivers who have completed the basic course within the previous six months or as day two following a basic course. It is ideal for delegates who drive off road on a regular basis as part of their job.

Course outline

The full-day course is designed for a 1:3 ratio starting at 09.00 am. The course is made up of three modules from the following four:

- 1 Driving with a load:** The module focuses on the different vehicle dynamics when traversing off-road terrain with a heavier vehicle, including:
 - Advanced route planning and driving a V shaped gully.
 - Reversing out of a failed route with/without using a Banksman.
 - Driving through water (site and season dependent).
- 2 Self-recovery:** Covering best use of shovels and traction mats and discussing various self-recovery techniques including:
 - Reduced tyre pressures.
 - Use of a Banksman/radios
- 3 Recovery using standard tow ropes and kinetic strops:** Focusing on the safety aspects of third-party vehicle recovery including:
 - Use of correct equipment, connection points and ground recognition
 - Communication options
- 4 Off-road trailer towing:** Trailer checks, safe connecting and disconnecting a trailer on off-road terrain, safe manoeuvring and reversing and returning to the road checks.

Modules one and two are compulsory, customers can then choose either module three or four depending on their requirements.



Professional 4x4 | In-House Trainer

Course aims

The course aims to give delegates a thorough grounding in:

- 4x4 technology and the types of 4x4 systems available.
- The principles and practice of driving off-road safely and minimising the potential environmental impact of 4x4 vehicles.
- Legislation relating to off-road driving.
- Off-road driving techniques.
- The knowledge, skills and techniques required to train employees in driving 4x4 vehicles off-road safely.

Pre-requisites

Delegates must have completed our basic and advanced courses or hold an equivalent qualification from another provider. They must also hold a nationally recognised instructor/trainer qualification or preferably a PTTLS or an Award in Education and Training level 3 qualification before being accepted on the course.

Course outline

The 5-day course is designed for a 1:2 ratio starting at 09.00 am. It will develop and test delegates' appreciation of 4x4 systems and tried and tested driving and journey planning techniques that minimise the risks of off-road driving.

Equip delegates with effective methods to impart their knowledge to others and get the best from their students in the classroom and in the vehicle.

Delegates receive feedback and guidance throughout the course before a final examination of their ability to train others.

- **Day 1:** Participate and observe the delivery of the Professional 4x4 Off-Road Driver – Basic course.
- **Day 2:** Participate and observe the delivery of the Professional 4x4 Off-Road Driver – Advanced course.

- **Day 3:** Coached by a professional off-road trainer, participants will practise their classroom delivery skills using the Professional Off-Road Driver – Basic course presentation
- **Day 4:** Participants will practise their practical delivery skills, delivering training sessions on all the practical elements of the Professional 4x4 Off-Road Driver – Basic course whilst being mentored by a professional off-road trainer.
- **Day 5:** Participants will share the delivery of the Professional 4x4 Off-Road Driver – Basic course to a DriveTech examiner.

What's included:

The qualification includes up to three visits from a DriveTech coach to assist in their development and to quality assure the training.

Subsequent costs:

Successful candidates will need to apply to DriveTech to run courses, supplying dates and trainee's names. They will then receive all the up to date course material, once the course is completed course reports and material are returned and DriveTech will certify their successful trainees. Each course is subject to a separate cost, invoiced at the time of delivery.

Who is the course suitable for?

Our "In-house" trainer course is designed for experienced off-road 4x4 drivers whose management require off-road 4x4 training to be delivered to other employees within their own organisation, this course does not qualify individuals as independent off-road trainers. The course is accredited by RoSPA, and delegates successfully completing the course will receive the appropriate certification. The qualification lasts for three years, when delegates need to re-qualify.



Professional ATV/UTV | Off-Road User - Basic

Course aims

The course gives delegate's the basic knowledge and skills to drive ATVs safely on level ground and rough terrain.

Course outline

The full-day course is designed for a 1:3 ratio starting at 09.00 am. The course emphasises the health and safety aspects of using and ATV or UTV in the off-road environment and comprises:

- Introduction to machine(s).
- Personal protective equipment.
- Vehicle familiarisation, pre-start safety checks and procedures.
- Operations planning and safe operation on level ground.
- Operating on slopes and rough terrain.
- Basic trailer handling.

Who is the course suitable for?

The course is suitable for those with or without ATV driving experience and who are required to use ATV or UTVs as part of their daily tasks. The courses are RoSPA accredited and an appropriate certificate will be provided on successful completion of the course.

Professional ATV/UTV | Off-Road User - Advanced

Course aims

This course follows on from the basic allowing trainees to further hone their skills whilst learning new ones on a more challenging terrain with laden machines or machines fitted with ancillary equipment.

Course outline

The half day follow-up course is designed for a 1:3 ratio starting at 09.00 am. The course is individually tailored for customers' requirements. It emphasises the health and safety aspects of using ancillary equipment attached to a standard machine in the off-road environment and would include but not restricted too:

- Towed equipment
- Temporary fitted equipment (winches, sprayer etc as required).
- Loading and using the machine off-road.
- Operations planning and safe operation on rough and challenging terrain.

Who is the course suitable for?

The course is suitable for those who have passed the basic course and need further training covering the use of a machine fitted with ancillary equipment and in a fully laden state. These courses are RoSPA accredited and an appropriate certificate will be provided on successful completion of the course.





Professional | Sand and Shingle Driver

Course aims

This RoSPA accredited course aims to give delegates the knowledge and practical experience to drive safely on sand and shingle surfaces, e.g. those found in coastal areas. This course is seasonal and location dependant, please check with us for availability.

Course outline

The full-day course is designed for a 1:3 ratio starting at 09.00 am. The course emphasises the health and safety aspects of driving off-road vehicles on beaches, foreshores and other sandy terrain, it comprises:

- Vehicle preparation.
- Surface and terrain assessment.
- Safety checks.
- Loading and stability.
- Off-road driving techniques and practice.
- Vehicle self-recovery and recovery techniques.

Who is the course suitable for?

This is an ideal course for delegates who need to traverse beaches and foreshores on a regular basis as part of their job. Course participants are expected to have a basic familiarity with 4x4 vehicles in off-road environments having ideally completed the Professional 4x4 off road driver – Basic.

Professional | Winch Operator - Basic

Course aims

The course gives delegates the knowledge and skill to use a winch safely during the course of their work, particularly recovery or self-recovery of a vehicle that has become stuck while travelling off-road.

Course outline

This RoSPA accredited, full-day course is designed for a 1:3 ratio starting at 09.00 am. The course emphasises the health and safety aspects of operating winches and using ancillary equipment. The course comprises:

- Winching calculations.
- Safety considerations.
- Inspection of winching equipment.
- Anchorages.
- Selection of the correct winch layout and ancillary equipment.
- Preparation for winching.
- Managing a winch task of a third party vehicle and self-recovery up to a two-part pull

Who is the course suitable for?

Any drivers who use a winch as part of their work or who are likely to encounter severe off-road terrain, 4x4 driving instructors who want to broaden their knowledge and capabilities. This is the first course in a progressive programme. An appropriate certificate along with individual course reports will be provided on successful completion of the course.

Professional | Winch Operator - Advanced

Course aims

The second course in this progressive programme, also RoSPA accredited, aims to enhance the skills learnt on the basic course. It will broaden the delegates the knowledge of winching theory and practise them on more advanced winch pulls allowing them to use winching equipment to its maximum potential reducing the need to call out professional recovery technicians.

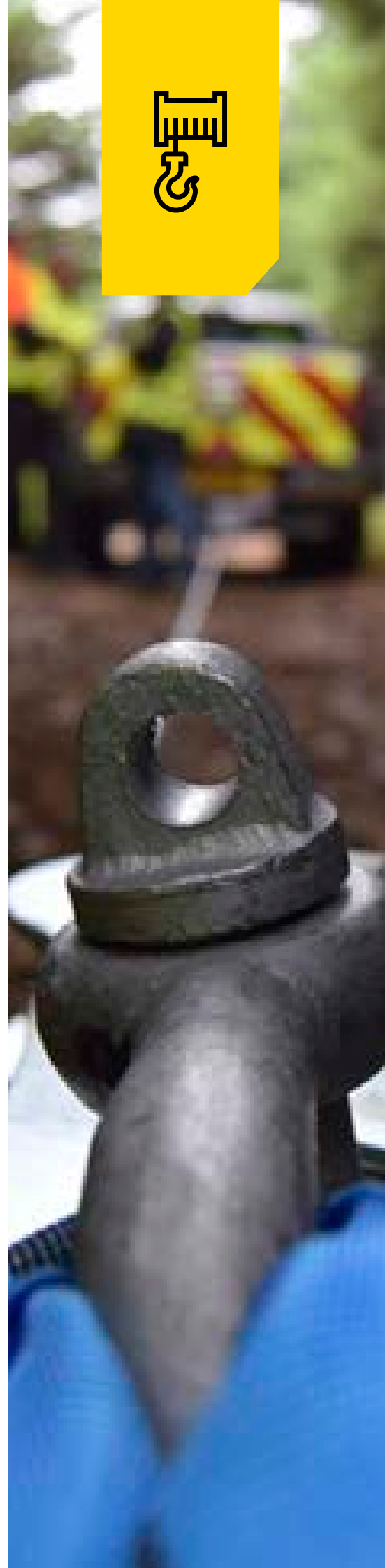
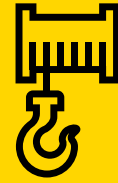
Who is the course suitable for?

The course is suitable for any drivers who use a winch as part of their work or who are likely to encounter severe off-road terrain, 4x4 driving instructors who want to broaden their knowledge and capabilities. This is the second course in our progressive programme, attendees must have completed the "Professional Winch Operator - Basic" course prior to applying. An appropriate certificate along with individual course reports will be provided on successful completion of the course.

Course outline

The full-day course is designed for a 1:3 ratio starting at 09.00 am. The course emphasises the health and safety aspects of operating winches and using ancillary equipment. The course comprises:

- Revision of basic course content.
- Use of a Mechanical advantage.
- Two-part pulls.
- Indirect pulls.
- Managing a winch task of a third party vehicle and self-recovery up to a two-part pull, direct and indirect.



Training Locations | England and Wales



- 01 Newton Aycliffe

- 02 Doncaster

- 03 Carsington Water

- 04 Stafford

- 05 Warwick

- 06 Stourport on Severn

- 07 Cirencester

- 08 Oxford

- 09 Horsham
(Limited Course Types)

- 10 Bala

- 11 Llandrindod Wells

Notes |

drivetech.co.uk